



# DANCE HOUSE HELSINKI 2020

ATELIER

BUILDING A DANCEHOUSE

20-21 AUGUST 2015

BASSANO DEL GRAPPA

TUOMO HAHN

# CONTENTS



- Statistics about Finland as a dance country
- House of Dance association
- Planning phases
- Building plans currently

# FINLAND AS A DANCE COUNTRY



- Around 800 000 active amateurs
- Around 1000 artists – **65%** of them live in the Helsinki region
- Ca 50 companies – ca **80%** work as a freelancers
- In 2014, there were 171 premieres and over 3000 performances
- In 2014, **450 000** people saw a dance performance (2,5 million people saw a theatre performance)
- In 2014, 36 Finnish dance companies and choreographers works were seen abroad in 28 different countries
- There are 10 dance schools providing professional education

# FUNDING OF DANCE



- Dance receives 1-2% of all the public funding for arts
- Regular state subsidies:  
The Finnish National Ballet, Helsinki Dance Company, 9 dance theatres, 2 dance production centres and 6 regional dance centres in different parts of the country
- Ca 40 companies are financed by grants and production-related funding!
- > Fragmented groups of actors and weak financial basis

# HOUSE OF DANCE ASSOCIATION FORMED IN 2010



- Members nationwide - both organisations and individuals as well as different genres
- Received EUR 1,25 million grant from private foundations for the 2011–2015 period
- Received EUR 15 million "conditional grant" from Jane and Aatos Erkkö foundation for the building investment 2014

# A RESOURCE FOR ARTISTS AND AUDIENCES



- Interaction and dialogue between audiences and art forms: substance, skill and well-being
- Active role in wider Finnish society through stakeholder partnerships
- Brings together industry actors and establishes networks
- A dance hub
- Initiate and advance national and international partnership projects

# CUSTOMERS



- Dance professionals, amateurs, audiences and fans
- Dance and dance culture as an industry; artists, teachers, groups, societies, associations, schools and commercial enterprises. Other arts and culture sector bodies. other organisations, communities and companies.
- With help of the background studies and interviews we have an understanding of the requirements of the different customer segments (venue and co-production partnership, better marketing resource, new accessible services for the audience)

# Services of the Dance house

Volume of the actions  
= visitors





# BUDGET OF THE BUILDING

Three-part investment plan,  
initial estimate EUR 34 M (VAT at 0%)

- Phase 1, renovation: EUR 1 M
- Phase 2A, renovation: EUR 6 M
- Phase 2B, construction: EUR 27 M

**Schedule of works, phase 1: 2016, phase 2B: 2020**

Estimated visitors annually: 100,000–150,000  
Annual budget approx. EUR 4 million.

# PLANNING PHASES



- Background study into the dance sector's new premises requirements and vision and strategy work, 2010-2011
- Strategy based space programming and location studies (JKMM Architects) 2012
- Dance house in connection with the Cabel Factory, draft plans and estimates (City of Helsinki, Public Works Department, Real Estate Department, JKMM Architects), 2013
- The grant decision of Jane and Aatos Erkko foundation 15 M€ for the building, 2014

# PLANNING PHASES



- Working group with the state and city officials 2015
- 
- The budget decisions by the state and city of Helsinki for the investment 6+6 M€ and for annual cost subsidy 1+1 M€, 2015
- Project plan and competition program 2015-16
- Open international architectural competition 2016
- The final design and construction, 2017-2020
- The new building is completed, 2020

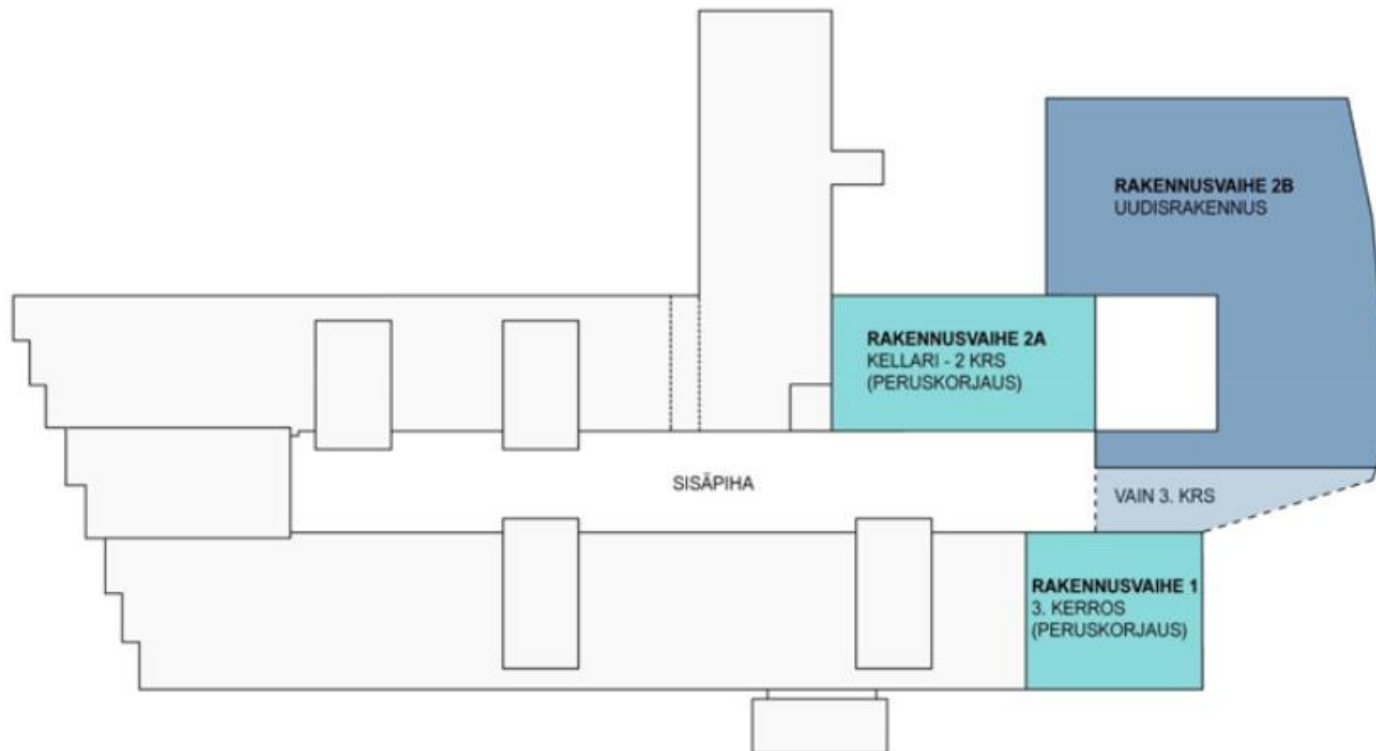
# THE LOCATION IN HELSINKI



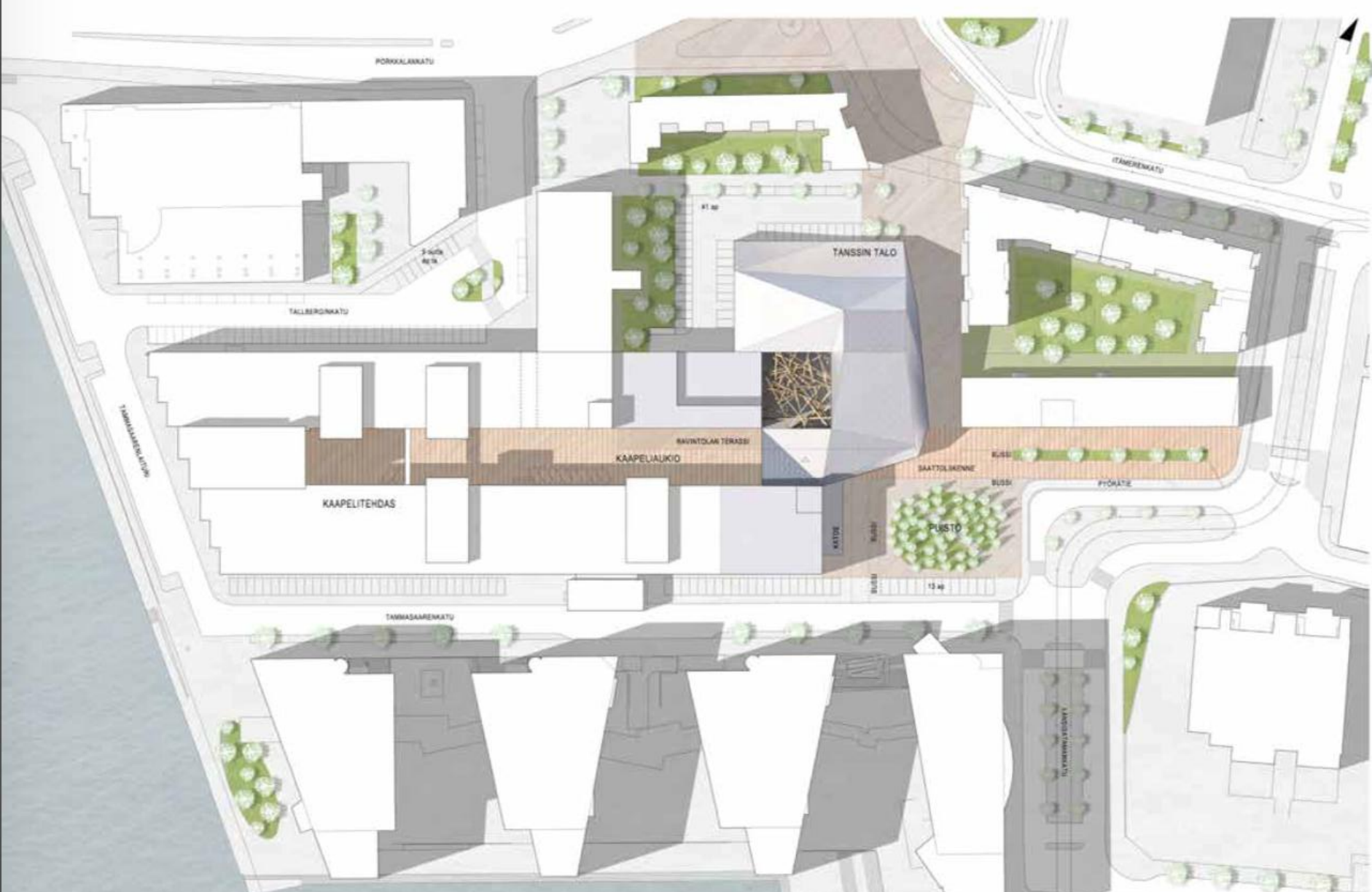
# THE SITE AND THE CABLE FACTORY



# FIRST ARCHITECTURAL SKETCH



Kaavio Tanssin talon rakennusvaiheiden sijoittumisesta Kaapelitehtaalle



T


TANSSIN TALO

HUOM! SUUNNITELMA VANHASSA KORVUJARJESTELMÄSSÄ

ASEMPIIRUSTUS	1:1000	17.12.2013
ARKKITEHTITOIMISTO JKMM OY LAPINRINNE 3 00100 HELSINKI P +358 (0)9 2522 8700 F +358 (0)9 2522 8710 WWW.JKMM.FI		

- YLEISÖTILAT / AULAT
- YLEISÖTILAT / APUTILAT
- RAVINTOLA
- ESITYSSALIT
- HARJOITUSSALIT
- ESINTYJÄJEN TILAT
- TOIMISTOTILAT
- TEKNISET TILAT / VARASTOT / HENKILÖKUNNAN TILAT





T

TANSSIN TALO

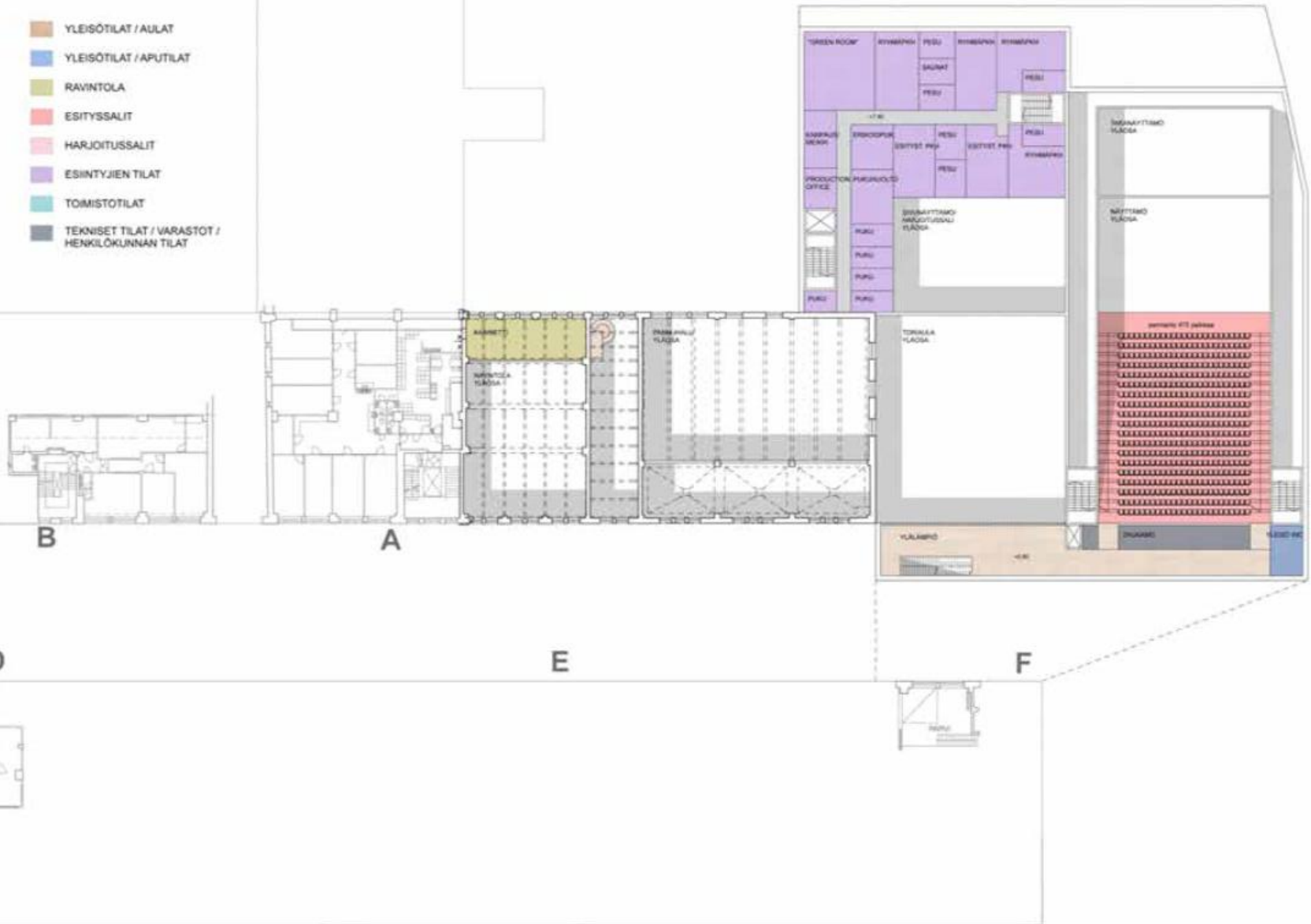
HUOM. SUUNNITELMA VANHASSA KORTTELIJÄRJESTELMÄSSÄ

	1. KERROS	1:400	17.12.2013
--	-----------	-------	------------

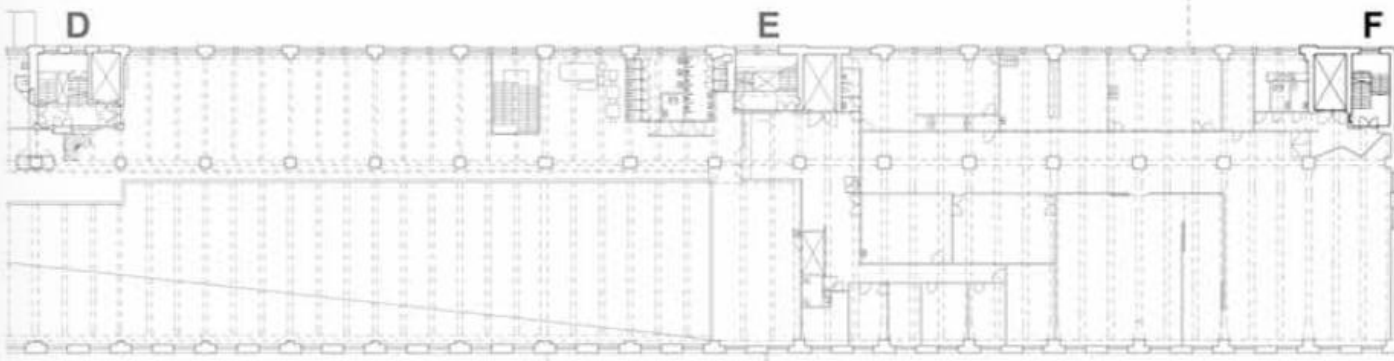
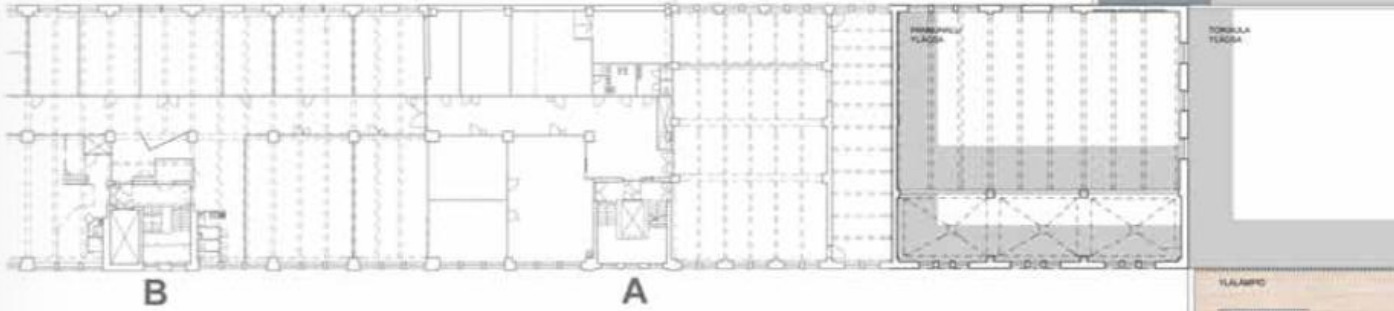
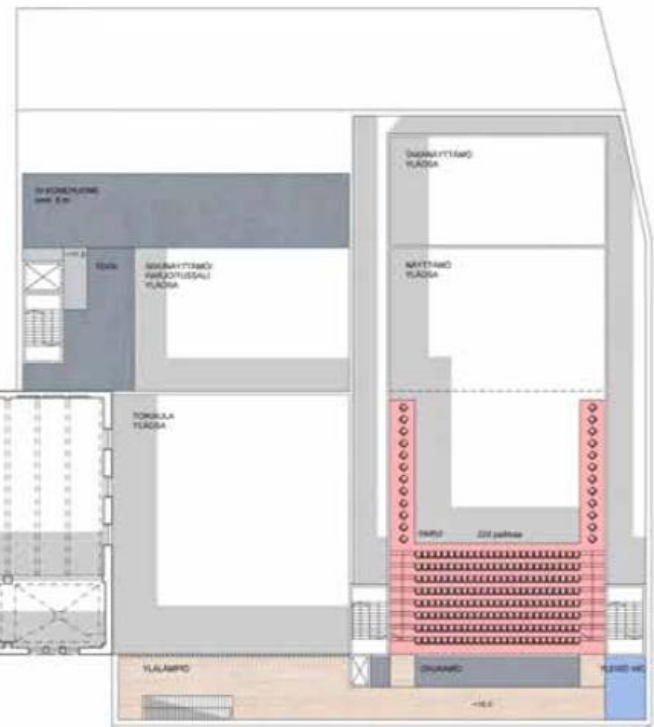
ARKKITEHTITOIMISTO JAWM OY LAFINRIINEN 2 00100 HELSINKI P+358(0)9 2522 9700 F+358(0)9 2522 8710 WWW.JAWM.FI



- YLEISÖTILAT / AULAT
- YLEISÖTILAT / APUTILAT
- RAVINTOLA
- ESITYSSALIT
- HARJOITUSSALIT
- ESIINTYJIEN TILAT
- TOIMISTOTILAT
- TEKNISET TILAT / VARASTOT / HENKILÖKUNNAN TILAT

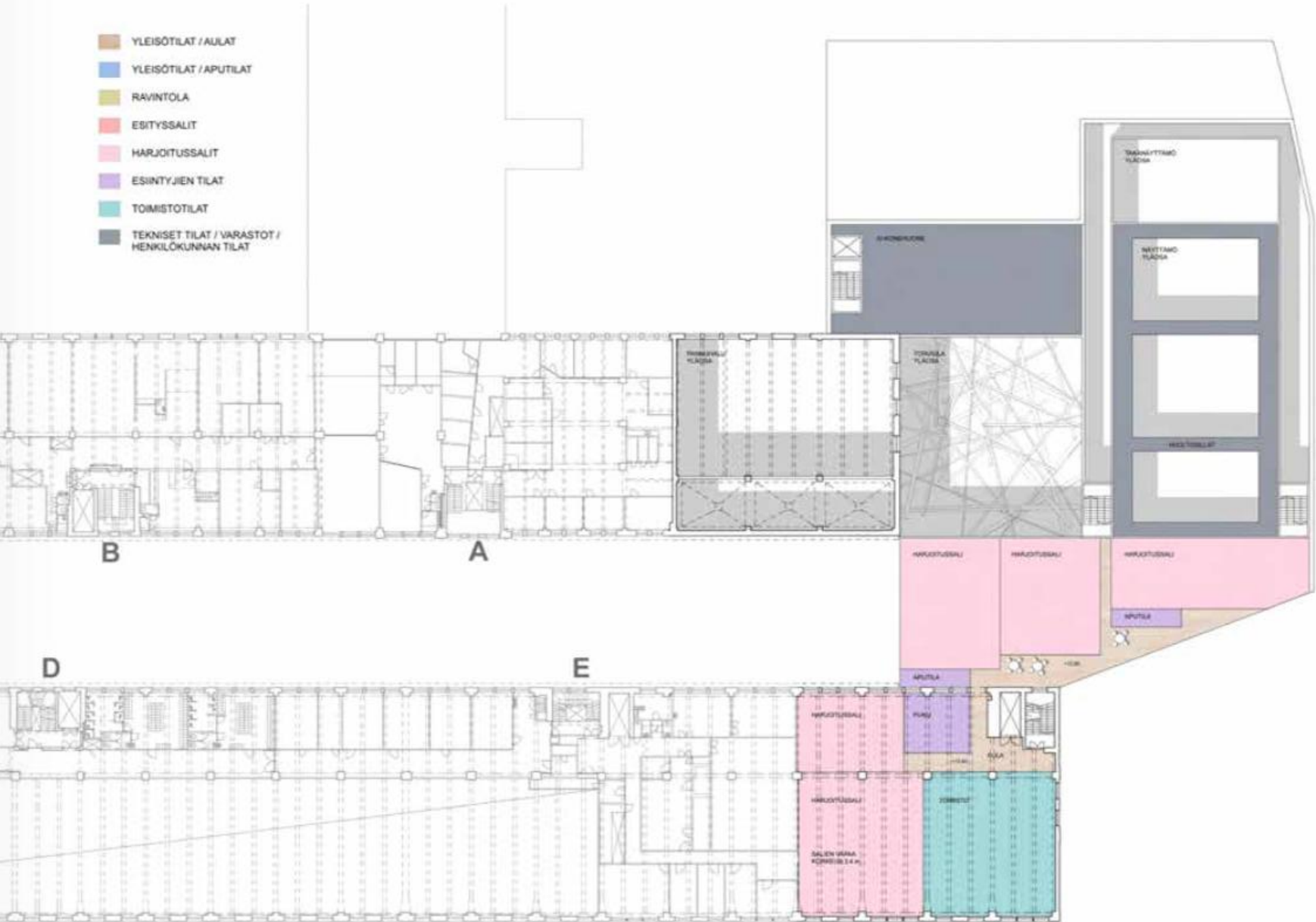


- YLEISÖTILAT / AULAT
- YLEISÖTILAT / APUTILAT
- RAVINTOLA
- ESITYSSALIT
- HARJOITUSSALIT
- ESIINTYJEN TILAT
- TOIMISTOTILAT
- TEKNISET TILAT / VARASTOT / HENKILÖKUNNAN TILAT

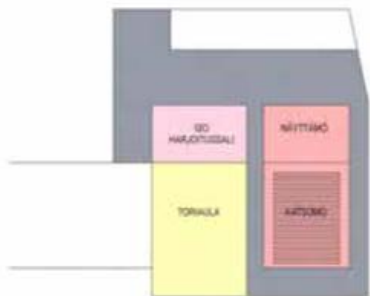


	T	TANSSIN TALO		HUOM. SUUNNITELMA VANHASSA KORJOJARJESTELMÄSSÄ	
		2. KERROS	1:400	17.12.2013	
ARKKITEHTITOIMISTO JKM OY LAPINRINNE 2, 00100 HELSINKI P +358 (0)9 2822 3700 F +358 (0)9 2822 3710 WWW.JKM.FI					

- YLEISÖTILAT / AULAT
- YLEISÖTILAT / APUTILAT
- RAVINTOLA
- EBITYSSALIT
- HARJOITUSSALIT
- ESINTYJÄN TILAT
- TOIMISTOTILAT
- TEKNISET TILAT / VARASTOT / HENKILÖKUNNAN TILAT



<span style="font-size: 2em; font-weight: bold; vertical-align: middle;">T</span>	TANSSIN TALO			HUOM: SUUNNITELMA VANHASSA KORJOJARJESTELMÄSSÄ	
		3 KERROS		1400	17.12.2013
ARKKITEHTITOIMISTO JKMM OY LAPINKIINNE 3 00100 HELSINKI P+358 (0)9 2522 8700 F+358 (0)9 2522 8710 WWW.JKMM.FI					



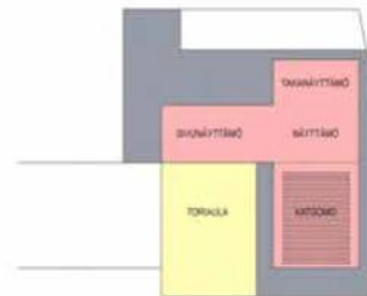
ISO SALI  
NORMAALKÄYTTÖ, TANSSIESITYS



ISO SALLI TASALAITIA  
ESIM. KONFERENSSIKÄYTTÖ



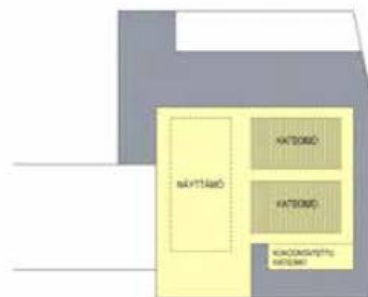
ISO SALLI KESKINÄYTTÄMÖ JA  
LAAJENNETTU KATSOAMO



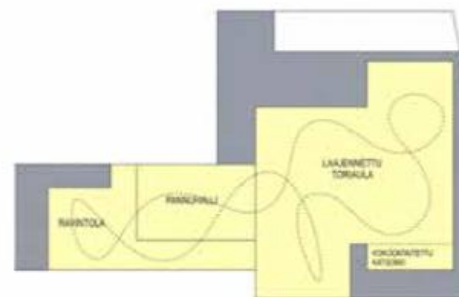
ISO SALLI LAAJENNETTU NÄYTTÄMÖ



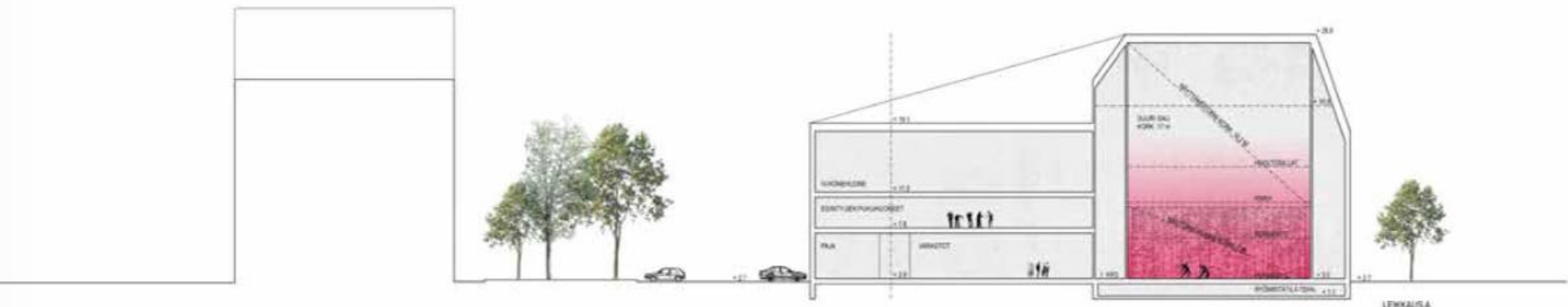
LAAJENNETTU TORIALLA  
ESIM. LAVATANSSIKÄYTTÖ



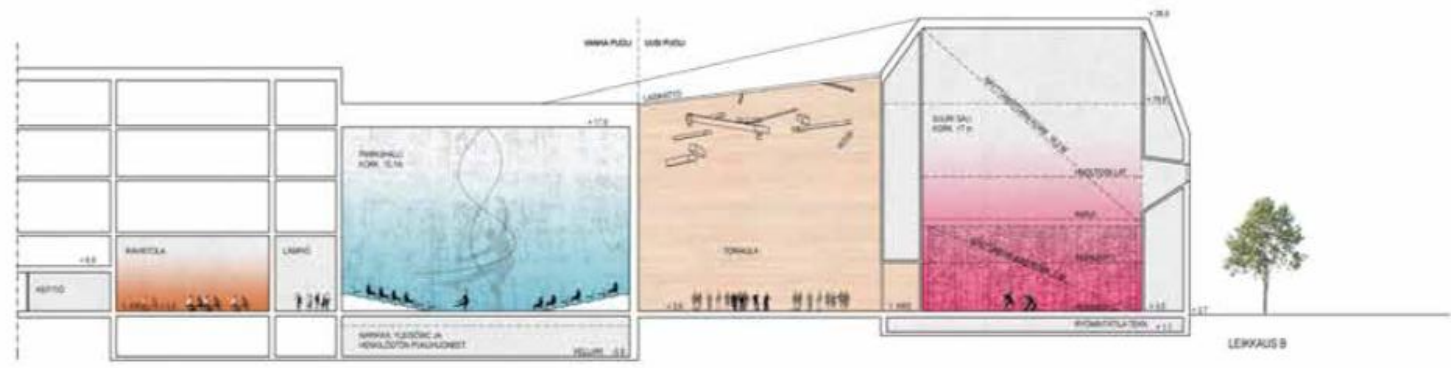
ISO SALLI, KÄÄNNETTY NÄYTTÄMÖ



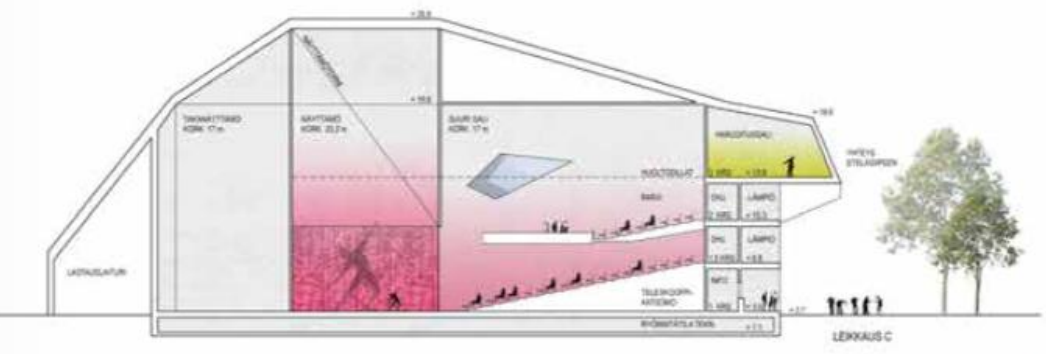
KAIKKI ESITYSTILAT KÄYTTÖSSÄ,  
ESIM. MESSUTAPAHTUMA



LEIKKAUS A



LEIKKAUS B



LEIKKAUS C

	T	TANSSIN TALO		HUOM. SUUNNITELMA VINHASSA KORKOJARJESTELMÄSSÄ	
		LEIKKAUKSET A, B, C		1:400	17.12.2013
ARKKITEHTITOIMISTO JYVÄSKY LÄPINRINNE 2 00105 HELSINKI P+358 (0) 2922 8700 F+358 (0) 2922 8710 WWW.JYVKK.FI					







T

## TANSSIN TALO

HUOM. SUUNNITELMA VANHASSA KÖRKOJÄRJESTELMÄSSÄ

HAVAINNEKUVA AUKIOLTA

17.12.2013

ARKKITEHTITOIMISTO JKMM OY LAPINRINNE 2 00100 HELSINKI P+358 (0)9 2522 0700 F+358 (0)9 2522 0710 WWW.JKMM.FI









# THANK YOU

Tanssin talo ry

Tuomo Hahl, tel: +358 (0)40 5506203  
tuomo.hahl@pp.inet.fi

Hanna-Mari Peltomäki, tel: +358 (0)44 5131069  
hanna-mari.peltomaki@tanssintalo.fi